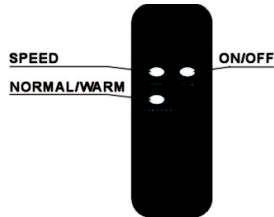


OPERATION:

Before operating, please ensure that the installation and wire connection are correct.

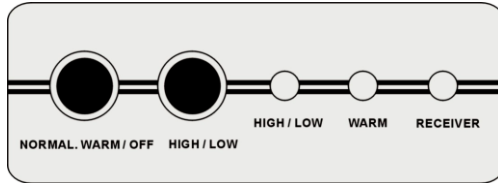
1. Operating by Remote Control:

Direct the remote control towards the receiver within a distance of 6m (60° range). Press "ON/OFF" button to start normal air flow, then press "NORMAL / WARM" to get warm air. By adjusting "HIGH / LOW" button, you can change the air volume, no matter how the unit is working, under normal air or warm air condition. When pressing "ON / OFF", if the unit is working under normal air condition, it turns off; if under warm air condition, it will be turned off automatically after 2 minutes' delay (during the delay, the green light indicator lights up).



2. Operating directly by the Receiver:

Press "Normal, Warm / OFF" button; the unit operates in normal air condition. To select normal or warm air, or to turn off the unit, just press "Normal, Warm / OFF" again. By adjusting "HIGH / LOW" button, you can change the air volume, no matter how the unit is working, under normal air or warm air condition. When pressing "ON / OFF", if the unit is working under normal air condition, it turns off; if under warm air condition, it will be turned off automatically after 2 minutes' delay (during the delay, the red light indicator lights up).



MAINTENANCE

1. Unplug the unit from the power source prior to checking or maintaining.
2. Keep electric motor or other parts away from moisture, to avoid short circuit.
3. Regular checking and maintenance is recommended. Clean the dust off. Simply clean with a cloth dampened in mild detergent.
4. Detachment of the unit must be executed only by professionals.

AND REPAIR:

from the

SPECIFICATIONS:

Model	Power (W)			Air Velocity (m / s)	Length (mm)	Weight (kg)
	Normal		Warm			
	HI	LO				
ARH-8509	156	96	6000	7.5	900	14.9
ARH-8512	178	126	7200		1200	19
ARH-8515	207	154	9000		1500	23.3

NOTE: Rated voltage and frequency are stated as per rating label.

UNITED®

By AMIRIDIS – SAVVIDIS S.A.

AIR CURTAIN

WITH HEATING

Operating Instructions



Models : ARH-8509, ARH-8512, ARH-8515

Before using this unit, please read all the instructions carefully.

PRODUCT OUTLINE:

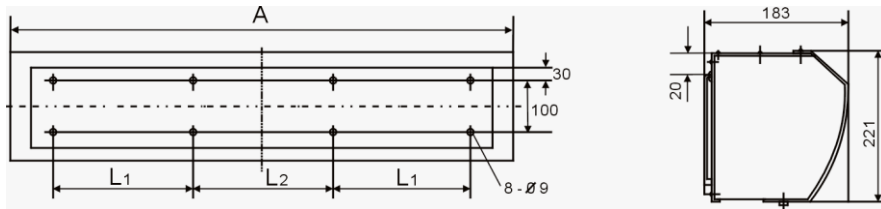
Open doors stand for a considerable amount of energy loss in a building. A correctly installed AIR CURTAIN can reduce the heat loss through the door as much as 90%. Except for the obvious energy savings in money, the AIR CURTAINS prevents cold draught that can cause absence due to illness and also allows shops to keep their doors open in winter time, which has proven to attract more customers. AIR CURTAINS give a true meaning to the slogan “a warm welcome”.

CONDITIONS OF USE:

Please DO NOT install the unit under following conditions:

1. Do not operate in areas with ambient temperature over 50°C or below -10°C.
2. In steamy areas or areas with relative humidity over 95% at room temperature.
3. In areas containing oily smoke.
4. In areas where materials or gases may cause explosion.
5. Near corrosive gases.
6. In areas where the unit may be sprinkled with water.

DIAGRAM:

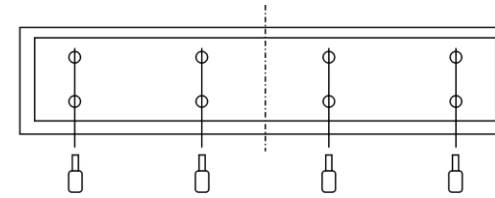


[Dimensions : mm]

Model	A	L1	L2
ARH-8509	900	221	183
ARH-8512	1200	221	183
ARH-8515	1500	221	183

INSTALLATION:

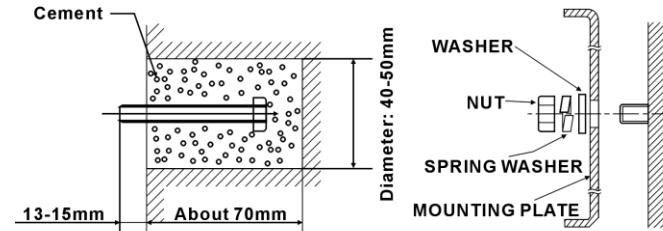
1. Unscrew the mounting plate and take it off. (Fig. 1, Fig. 2)
2. Drill a hole following the instructions, then insert the bolt and fix it with cement. (Fig. 3)
3. Hang the mounting plate and ensure that it is fixed. (Fig. 4)
4. Install the unit onto the mounting plate and ensure that it is safely fixed. Then tighten the screws. (Fig. 5)



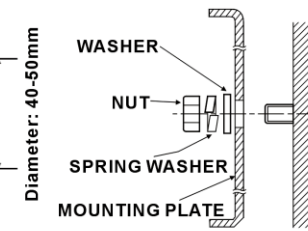
(Fig. 1)



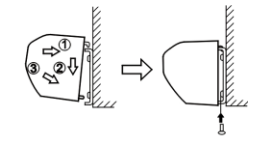
(Fig. 2)



(Fig. 3)



(Fig. 4)

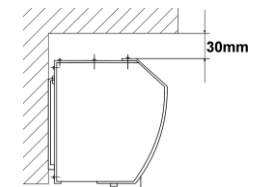


(Fig. 5)

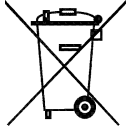
CAUTIONS / INSTALLATION:

During installation, please pay special attention to the following points in order to obtain the ultimate efficiency.

1. Install on solid place to avoid vibrations when machine is running, and also for safety reasons. This way, unnecessary noise caused by vibration can be prevented.
2. AIR CURTAINS are designed for indoor use.
3. Choose the most suitable model depending on the height of the room. If the unit is fixed too high, the shut-off distance will be affected and the efficiency will be reduced.
4. The air is drawn in from the front of the unit and is blown out downwards.
5. Several units can be mounted next to each other in case of wide door openings. In this case, there must be a space 20-40mm between them.
6. During installation, there must be no gap between the mounting plate and the wall.
7. The distance between the unit and the ceiling must be at least 30mm.
8. The unit must be installed in horizontal position.
9. It is recommended to install the unit at a height of at least 2.3m above the ground.
10. For safe operation, use the control switch to connect the electricity source and the unit wire. If you are not going to use the unit for a long time, shut the control switch down.



NOTICE ABOUT RECYCLING



Your product is designed and manufactured with high quality materials and components which can be recycled and reused.

This symbol means that electrical and electronic equipment, at their end-of-life, should be disposed of separately from your household waste. Please dispose of this equipment at your local community waste collection/ recycling centre.

In the European Union there are separate collection systems for used electrical and electronic products. Please help us to conserve the environment we live in!

DECLARATION OF CONFORMITY

Herewith, Amiridis-Savvidis S.A. states that this product, complies with the requirements of below directives:

EMC-Directive: 14 / 30 / EU

Low Voltage Directive: 14/ 35 / EU

CE Marking: 93 / 68 / EEC

RoHS Directive: 11 / 65 / EU



The detailed declaration of conformity can be found at www.united-electronics.gr

Exclusive importer in Greece:

Amiridis – Savvidis S.A.

87A, 17th Noemvriou str, P.C. 55534

Thessaloniki – Greece

T: +302310944944 | F: +302310944940

www.amiridis-savvidis.gr