

UNITED[®]

AIR CURTAIN

INSTALLATION MANUAL

ARU-8409 / ARU-8412 / ARU 8415

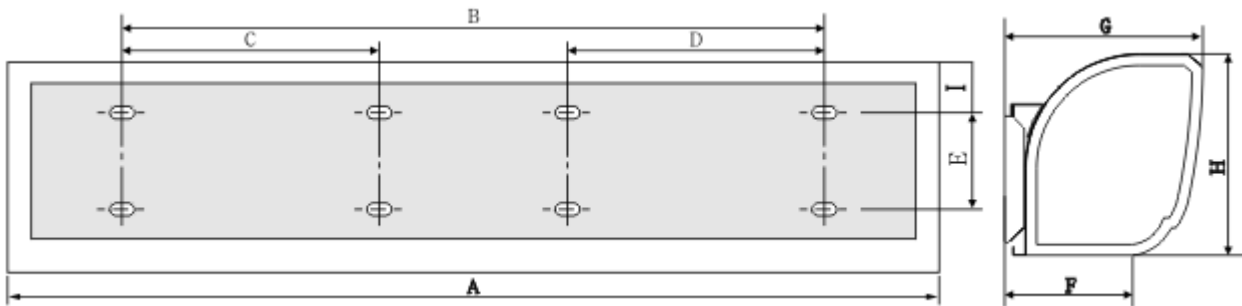


Thank you for purchasing this Air Curtain.
Please read the instructions carefully before use.

1、 PRODUCT INTRODUCTION

As one of the new top-class products for modern decoration, air curtain is also matched with the air-conditioner. Usually you can find it installed at the entrances of supermarket, theater, meeting room, hotel, office room, and storeroom to prevent the dust, mosquito and warm air, and so on.

2、 IDENTIFICATION & INSTALLATION DIMENSIONS

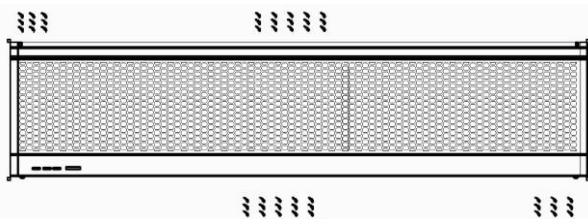


MODEL	A	B	C	D	E	F	G	H	I
ARU-8009	900	740	370	370	64	119	185	187	71
ARU-8012	1200								
ARU-8015	1500								

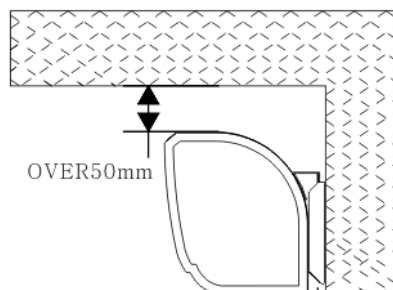
3、 INSTALLATION CAUTION

Before installation, please apply the same voltage and frequency, then follow the below instructions when installing the air curtain :

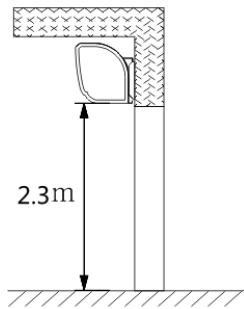
3.1 Please install the unit in a sturdy place to avoid the shaking and ensure its safety (because it may cause instability and trembling noise to the wall).



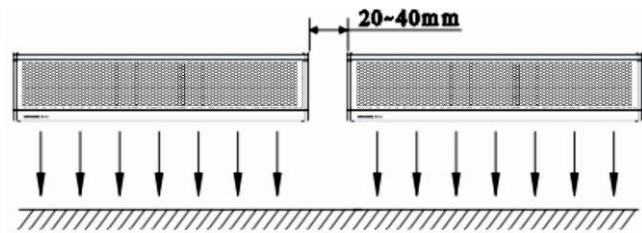
3.2 Please install the unit inside the room.



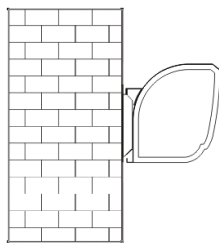
3.3 Don't install the unit too low, no less than 2.3 meters from the ground.



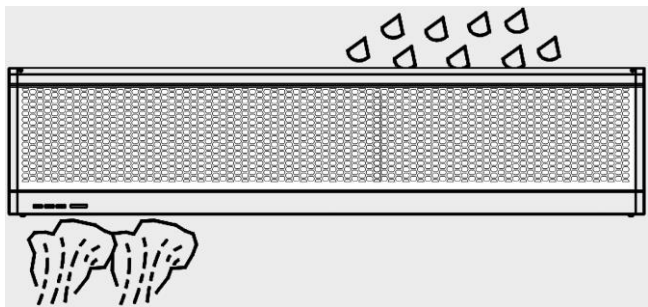
3.4 When the entrance is wider than the unit, it is recommended to install two or more units in parallel. In this case, provide 20-40mm gaps between the units.



3.5 Don't allow gaps between the unit and the wall. When hanging it from the ceiling, purchase the extra ceiling brackets.



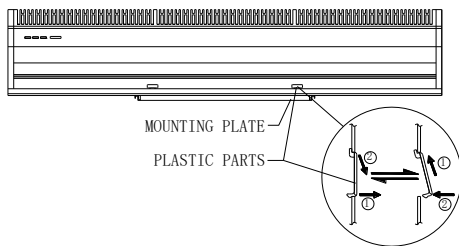
3.6 Do not install the unit in a place where it may be splashed with water or exposed to excessive steam, explosive gas or corrosive gas.



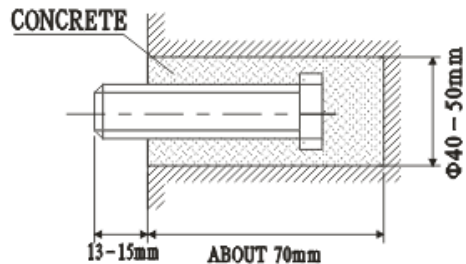
4、INSTALLATION

A、Installing on the concrete wall:

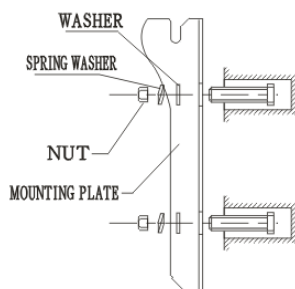
4.1.1 Remove the mounting plate
Remove the plastic parts, unclamping the fixed screws on the back of main body to remove the mounting plate.



4.1.2 Fix the bolts in the proper position (fix the position with the mounting plate and pour cement into the bolt holes.)

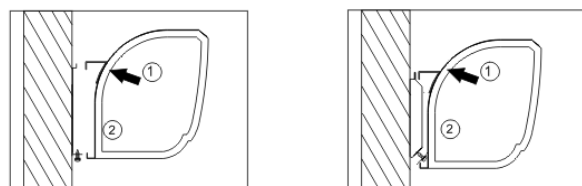


4.1.3 When the cement freeze, fit the mounting plate (use the washer and nut according to the following):



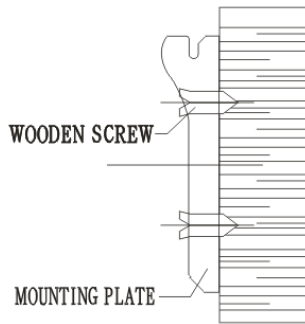
4.1.4 Install the main body

Set the main body onto the upper end of the mounting plate, and clamp it as below. Make sure it is fixing well.

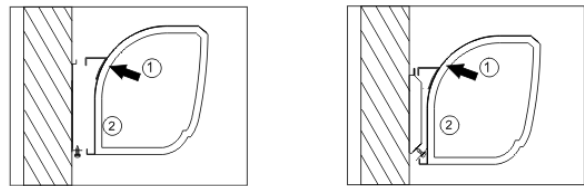


B、Installing on the wooden wall

4.2.1 Fix the mounting plate in the proper positions with tapping screw.

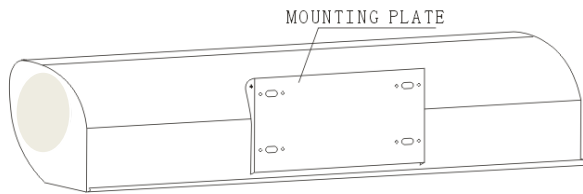


4.2.2 Same as the step 4.1.4

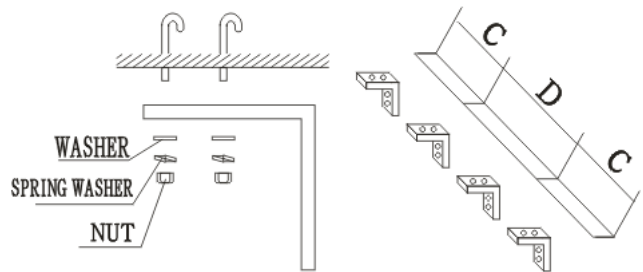


C、Hanging from the ceiling

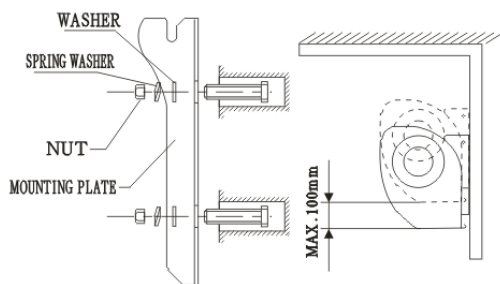
4.3.1 Remove the mounting plate from main body (Same as step 4.1.1)



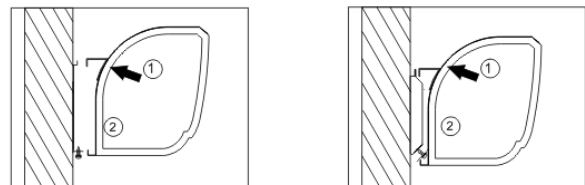
4.3.2 Fixing ceiling brackets as Fig.



4.3.3 Set the mounting plate on the ceiling brackets and ensure safety & fixing (use the bolts attached to the ceiling brackets as Fig. Using the ceiling brackets to hang from the ceiling, the position of mounting plate can be adjusted in the limit of 100mm.

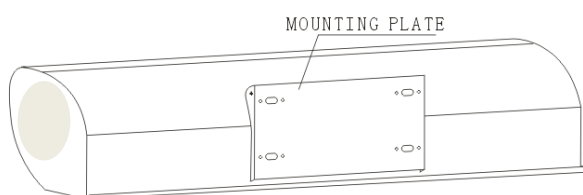


4.3.4 Do the same as step A to install the main body.

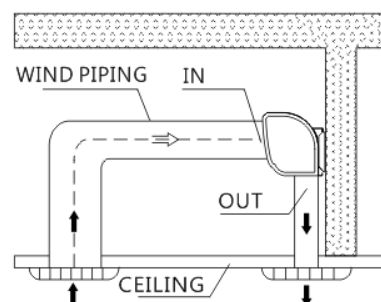


D、For above ceiling

4.4.1 Fix the air curtain as in the procedure for installing on the concrete wall.



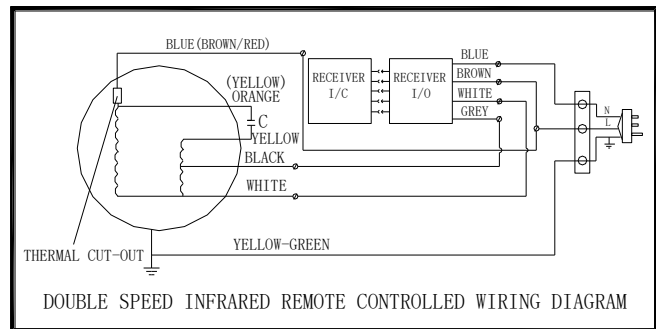
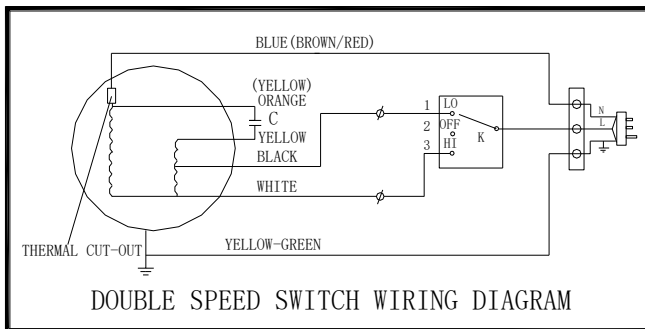
4.4.2 Then install the pipe as below.



5、 TECHNICAL PARAMETER

MODEL	Volt. (V~)	Freq (Hz)	Max input power (W)		Max air speed (m/s)		Air volume (m ³ /h)		Noise (dB)		Net weight (Kg)
			H	L	H	L	H	L	H	L	
	220-240	50	160	110	11	9	1400	1100	57	55	8.5
☐☐☐			200	150			1900	1600	58	56	10
☐☐☐			230	180			2500	2000	59	57	11.5

6、 ELECTRIC DIAGRAMS



7、 OPERATION

- 6.1 Turn on the power switch
- 6.2 Select the air speed: High[H]、 Low[L]
- 6.3 According to the installation place adjust the wind direction parts to obtain the best effect.

8、 CAUTIONS

- a)、 Use the unit at the rated voltage and frequency indicated on the nameplate.
- b)、 Disconnect power source before unit servicing.
- c)、 Routine maintenance must be done every year.
- d)、 Never use petrol, benzene, thinners or any other such chemicals for cleaning the unit.
- e)、 Don't allow water or any liquid to enter the motor.
- f)、 When power supply comes from a socket, the plug must be in accordance with IEC335-1. When the power cord is connected directly, polarity switches with contact gap 3mm at least, must be installed in the power line.
- g)、 In order to avoid danger of injury, electric installation of the air curtain and any kind of needed repair must be completed only from qualified technician.

NOTICE ABOUT RECYCLING



Your product is designed and manufactured with high quality materials and components which can be recycled and reused.

This symbol means that electrical and electronic equipment, at their end-of-life, should be disposed of separately from your household waste. Please dispose of this equipment at your local community waste collection/ recycling centre.

In the European Union there are separate collection systems for used electrical and electronic products.

Please help us to conserve the environment we live in!

DECLARATION OF CONFORMITY

Herewith, we state that this product, complies with the requirements of below directives:

EMC-Directive: 14 / 30 / EU

Low Voltage Directive: 14/ 35 / EU

ErP Directive 09 / 125 / EC

CE Marking: 93 / 68 / EEC

RoHS Directive: 11 / 65 / EU & Delegating Directive (EU) 15 / 863

The detailed declaration of conformity can be found at:

www.united-electronics.gr



Importer:

Kalliopi Karyda & Co, LP

87A, 17th Noemvriou str, P.C. 55535

Pylea, Thessaloniki, Greece

T: +302316006600 | F: +302316006650